

ARN O

MULTI-BIOMETRIC / ID TABLET



ANDROID



4G



WIFI



BLUETOOTH



NFC



GPS



IP65



CAMERA



1D BARCODE



2D BARCODE



IRIS SCANNER



FACIAL SCANNER

ARNO FUNCTIONS

BIOMETRIYA ARNO STANDS AS A PURPOSE-BUILT DEVICE METICULOUSLY DESIGNED FOR THE MOBILE AUTHENTICATION AND REGISTRATION OF INDIVIDUAL IDENTITIES. THIS CUTTING-EDGE SOLUTION INCORPORATES AN INTEGRATED PROFESSIONAL MRZ SCANNER, A SMART-CARD READER CAPABLE OF BOTH CONTACT AND CONTACTLESS OPERATION, A FINGERPRINT SENSOR, IRIS RECOGNITION CAPABILITIES, A FACIAL RECOGNITION CAMERA, AS WELL AS 1D AND 2D BARCODE SCANNING FUNCTIONALITY.

THE UTILIZATION OF ARNO PROVES TO BE INDISPENSABLE FOR VARIOUS SECTORS, INCLUDING LAW ENFORCEMENT, BORDER CONTROL, CIVIL ENROLLMENT, ELECTIONS, AND ORGANIZATIONS SEEKING TO VERIFY THE IDENTITIES OF EMPLOYEES AND VISITORS. ITS INTEGRATION OF FINGERPRINT AND FACIAL RECOGNITION TECHNOLOGIES SIGNIFICANTLY ENHANCES SECURITY BY COMBINING THREE DISTINCT BIOMETRIC METHODS WITHIN A SINGLE MOBILE TERMINAL: FINGERPRINT, IRIS, AND FACIAL RECOGNITION.

ARNO OPERATES ON THE LATEST ANDROID PLATFORM, BOASTING ADVANCED SECURITY FEATURES AND DEPENDABLE, HIGH-SPEED CONNECTIVITY OPTIONS SUCH AS 4G LTE. THIS ENSURES NOT ONLY SAFETY BUT ALSO DURABILITY DURING DAILY OPERATIONS. ARNO IS POISED TO GREATLY STREAMLINE THE COMPLEXITIES ASSOCIATED WITH MOBILE ID AUTHENTICATION AND REGISTRATION.

IN ADDITION TO THESE FEATURES, ENSURING SWIFT AND SECURE DATA COMMUNICATION WITH A REMOTE DATA CENTER, SUCH AS AFIS, REMAINS PARAMOUNT FOR THE SUCCESSFUL EXECUTION OF FIELD OPERATIONS. TO THIS END, ARNO OFFERS STATE-OF-THE-ART AND ADVANCED CONNECTIVITY TECHNOLOGY OPTIONS.

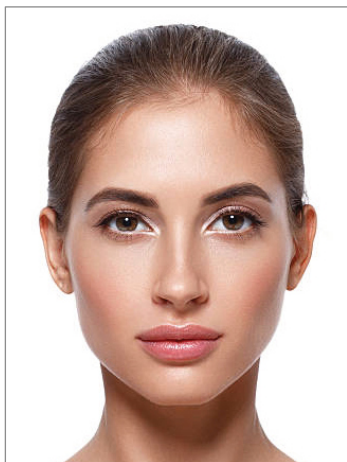
SENSORS AND VIEWS

LEADING EDGE SENSORS ARE EMPLOYEES FOR SUPERIOR QUALITY BIOMETRIC CAPTURE ACROSS A DIVERSE RANGE OF ENVIRONMENTAL CONDITIONS.



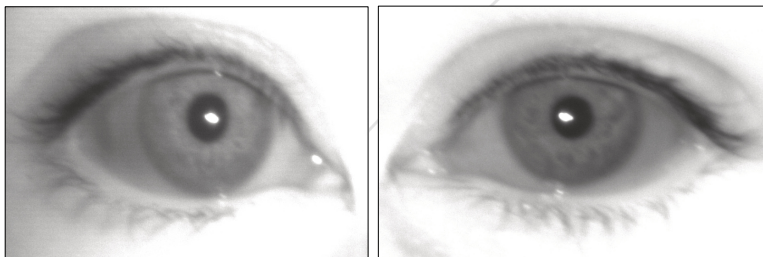
ADVANCE BIOMETRIC & IDENTITY CAPABILITIES

BIOMETRIA ARNO ENABLES HIGH PERFORMANCE MULTIMODAL BIOMETRICS AND DOCUMENT IDENTITY IN A UNIQUELY COMPACT FORM FACTOR, DELIVERING IRIS, FINGERPRINT, FACE PASSPORT, ID CARDS ENROLLMENT AND IDENTIFICATION.



- WITH ON-BOARD IMAGE QUALITY CHECKS, THE ARNO CONSISTENTLY CAPTURES HIGH QUALITY IRIS AND FACE IMAGES. BOTH IRIS AND FACE IMAGES ARE SHARP AND CENTERED QUALIFIES ISO STANDARDS 19794-6 AND 19794-5.

- DUAL IRIS CAPTURED SIMULTANEOUSLY IN SINGL CAPTURE



- WITH ARNO'S FBI CERTIFIED FAP 30 OR FAP 20 OPTICAL SENSORS CAPTURES FINGERPRINTS.

- WITH ON-BOARD QUALITY CHECKS, CAPTURE ONLY QUALIFIED DATA.



- **PASSPORT, NATIONAL-ID SCANNER**

IN TRAVEL, BORDER MANAGEMENT, NATIONAL IDENTITY AND SECURITY, READING ICAO-COMPLIANT INFORMATION FROM PASSPORTS, VISAS, AND ID CARDS IS CRUCIAL FOR IDENTITY VERIFICATION. ARNO ENHANCES THIS PROCESS BY INTEGRATING MRZ AND E-CHIP READING WITH IRIS, FINGERPRINT, AND FACE CAPTURE, ALONG WITH STANDARDS-COMPLIANT BIOGRAPHIC FIELDS.

THE STANDOFF-BASED APPROACH, TAKING AROUND A SECOND, IS FAST AND AUTOMATED, ALIGNING WITH THE USER EXPERIENCE OF IRIS AND FINGERPRINT CAPTURE. THIS METHOD ACCOMMODATES OFF-CENTER IDENTITY CHECK OR MISALIGNED DOCUMENT IDENTIFICATION.

PHYSICAL SPECIFICATION

DIMENSIONS	213mm(H) x 195.3mm(W) x 30.55mm / 20.95mm(D)
WEIGHT	850 g
DISPLAY	7.0Inch / HD(1280x800) - 700 nits (cd/m ²)
CPU & RAM	1.8 GHz Hexa-core CPU Cortex A72 Dual-core 1.8GHz / Cortex A53 Quad core 1.4Ghz
POWER	Extended Battery Li-Polymer 10,050mAh (embedded)
INPUT	3 Front keys, 5 Side keys (Programmable)
TOUCH PANEL	Capacitive Touch / Gorilla Glass 3 / 10 point multi touch
EXPANSION SLOT	2 slot for Micro SIM card, PSAM card slots
INTERFACES	USB type 3.0A Host, USB 2.0 OTG and External Serial RS232C
SENSORS	Accelerometer sensor, light sensor, geomagnetic sensor; gyroscope
NOTIFICATION	Sound, LED indicator
AUDIO	1 microphone, Dual speaker

COMMUNICATION SPECIFICATION

WLAN	Support 802.11 a/b/g/n/ac/d/e /h/i/k/r/v, 2.4G/5G dual-band, IPV4, IPV6; Fast roaming: PMKID caching, 802.11r, OKC; Operating Channels: 2.4G(channel 1~13), 5G(channel 36,40,44,48,52,56,60,64,100,104, 108,112,116, 120,124,128, 132,136,140,144, 49,153,157,161,165),Depends on local regulations;
WWAN (EUROPE, ASIA)	Frequency band EU (USA Optional) 4G LTE : 800, 900, 1800, 2100, 2600MHz 3G HSPA+ : 900, 2100MHz 2G GSM/GPRS : 900, 1800MHz
BLUETOOTH	Bluetooth 4.2 BLE
GPS	AGPS, GLONASS (optional)

DATA COLLECTION SENSORS SPECIFICATION

REAR CAMERA	13 Mega pixels + LED Flash
FRONT CAMERA	2 Mega pixels
CONTACT CARD READER	ISO 7816 Class A, B and C (5V/3V/1.8V) card
1D/2D SYMBOLOGY	1D, 2D, PDF417, QR code, Code 39, Code 128,DataMatrix, UPC-A (Zebra SE4710)
NFC	Integrated NFC Reader (NXP PN548) ISO/IEC 14443 A/B
BIOMETRIC - FINGERPRINT RECOGNITION	Optical FAP 20, BM-Slim 2 Suprema, 500 dpi, FBI PIV certified
BIOMETRIC - FACIAL RECOGNITION	ISO 19794-5
BIOMETRIC - IRIS RECOGNITION	5MP, ISO 19794-6, Iris capture volume 130mm x 45mm x 80mm

OPERATING SYSTEM SPECIFICATION

OS	Android 11 and above
SUPPORTED MDM	AirWatch
SDK	Available
LANGUAGE	JAVA
TOOL	Eclipse / Android Studio

USER ENVIRONMENT SPECIFICATION

OPERATING TEMP.	-4 °F to 140 °F / -20 °C to 60 °C
STORAGE TEMP.	-22 °F to 158 °F / -30 °C to 70 °C
HUMIDITY	Operating:10% RH - 75% RH noncondensing, Storage: 5% RH - 85% RH noncondensing
SEALING	1.2 m (4 ft.) drop to concrete / IP65
OTHER CERTIFICATION	CE, FCC, RoHS

APPLICATION RANGE

VARIOUS MODULES AND ACCESSORIES CAN BE SELECTED TO MEET CUSTOMERS' APPLICATION AT BORDERS, NATIONAL IDENTITY AND COMMERCIAL INDUSTRIES.



Border Control



National ID Enrollment



Finance



Law Enforcement



HEAD OFFICE:

SALES@BIOMETRIYA.COM

LAND LINE: +43 720 881116

P.O.Box: 1090, VIENNA, AUSTRIA

BRANCH OFFICE:

LAND LINE: +971 (0) 4523 0941

P.O.Box: 19220, DUBAI

WWW.BIOMETRIYA.COM